



An Independent School

for pupils aged 7 – 11 (Year 3 – Year 6).

COMING SOON

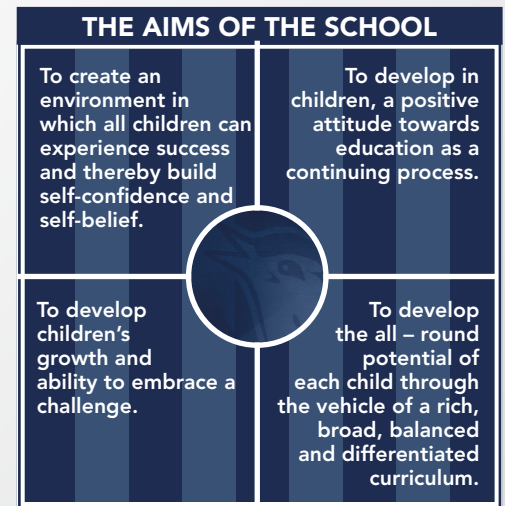


School Mission Statement

At The Regis Academy we aim to work in partnership with all members of the school community to make teaching and learning exciting and enjoyable. Our Aim is to support and challenge every child to achieve at the highest possible level and create a safe and secure environment where every child is happy, valued and prepared to make a positive contribution to our changing society.

We want to work in partnership with schools, education authorities and wider agencies to provide places for disadvantaged young people that would benefit from a smaller setting and are struggling to access mainstream education.

A referral form and risk assessment would need to be completed for the child, an induction meeting would need to take place with the child, school, parents/carers and any other professionals in attendance before the placement can begin. The induction meeting is a key part of the referral process where the child's needs can be discussed.



Charging

Service	Cost per day
Pupil	£80
Pupil who is a LAC	£85
Pupil with EHCP	£85
Lunch	£3 (If FSM)
Transport	£2

EG. A pupil with EHCP accessing Free School Meals and Transport = £90 per day.

Invoices will be raised half termly. Or you may wish to discuss a Service Level Agreement. Charges will be applied in the absence of a young person unless otherwise agreed.

Our school is based on Brasshouse Lane, Smethwick and can take up to 25 pupils.

Our aim is to reduce primary exclusions, allowing pupils to be referred who are at greatest risk of exclusion. Our aim would always be to re-integrate pupils back into mainstream school or other alternative education. We provide a flexible approach in response to each child's individual needs.

As an Ofsted registered Independent School pupils can be dual registered or maintained on the Regis Academy roll.

Attendance, targets and progress will be monitored. Termly reports will be completed for the referring partner and parent/carers.



Our Staff

Head of Centre (Designated Safeguarding Lead)

Two Qualified Primary Teachers

One with SEND experience for children that need extra support and interventions.

Qualified support staff

Who will support teachers and pupils within lessons.

Pastoral Manager

Who will work with children, their families and referring partner on interventions such as reintegration and behaviour.

All staff are trained and knowledgeable with safeguarding, in line with school requirements.

A Board of Governors has been formed that will be chaired by Mike Wilkes, who has been a teacher since 1982, working in both mainstream, special schools and a unit for students who had been permanently excluded from school. He was a Head teacher of an 11-16 secondary school with 1200 students. Among other roles he is currently the independent chair of a local authority panel working to accommodate hard to place students in education.

Curriculum Intention

Our curriculum intention is to promote a Values based education so children take responsibility for themselves and their actions, are respectful and develop resilience. Our curriculum encompasses not only the formal requirements of the National Curriculum, it goes beyond the classroom so that children encounter varied opportunities in their life.

For us the primary curriculum is the way in which we are going to develop a broad band of knowledge that exposes children to different ways of looking at the world. We aim to tailor education to individual need, interest and aptitude, so as to fulfil every child's potential. Every child will have access to a rich, broad, balanced and differentiated curriculum. We will use diverse teaching strategies to develop the talents of each child and teachers will use the flexibilities that already exist to ally high standards in the basics with opportunities for enrichment and creativity.



We believe that every young person deserves a chance of accessing education. We want them to be part of our Family.

If you are interested in finding out more or to put an expression of interest for a place, please contact:

Anna.pincher@albionfoundation.co.uk



Be part of the family

THE REGIS ACADEMY

