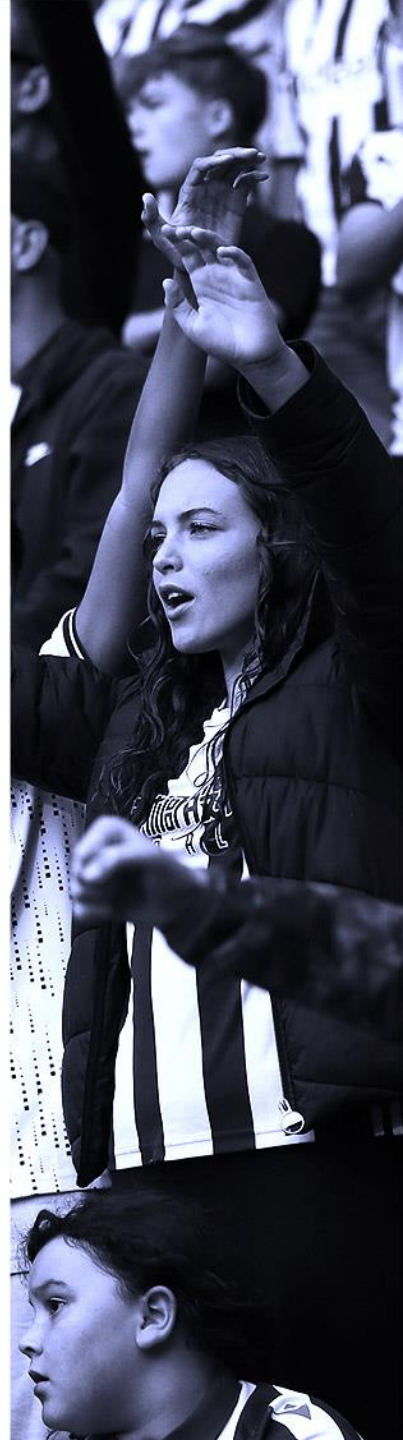




**West Bromwich Albion FC
Working Groups**

**BONDED BY BELIEF
SINCE 1878**





Albion Cares Strategic Group

Advisory Board Lead

Rob Lake¹

Director of the Albion Foundation

Sam Foxall¹
HR Business Partner

Ian Skidmore¹
Director of Fan Engagement & Communications

Tomasz Chadwick¹
Head of Commercial

Sarah McGenn¹
Club Secretary

EDI

Rachel Rankin² – Lead
Lucy Whitehouse
Erin Hicken

Wellbeing

Andy Wheeler – Lead
Tom Page - Lead

Sustainability

Chris Harris² - Lead

Safeguarding

Lisa Reynolds² - Lead

Champions

1 . Executive Team
2 . Club Management

BONDED BY BELIEF
SINCE 1878